
REFERENCE DOCUMENTS

SETTING UP THE PROXY	2
SET UP THE PROXY	2

SETTING UP THE PROXY

SET UP THE PROXY

EN01N80ZZZ120102001001

1. PROXY SERVER REFERENCED BY TROUBLESHOOTING

- (1) Set Internet Explorer (IE) as a proxy server, as the proxy server setting of IE is referenced by troubleshooting.

HINT

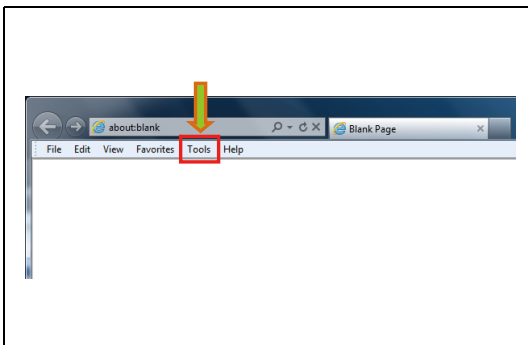
Windows administrator authority is required.

2. HOW TO SET IE AS A PROXY SERVER

- (1) From the IE menu, click [Tools].

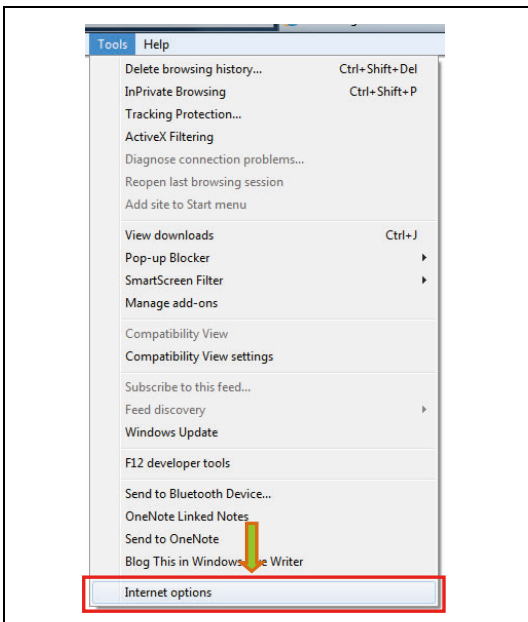
HINT

- This screen is the screen for IE9.
- The screen may differ depending on the IE's version.



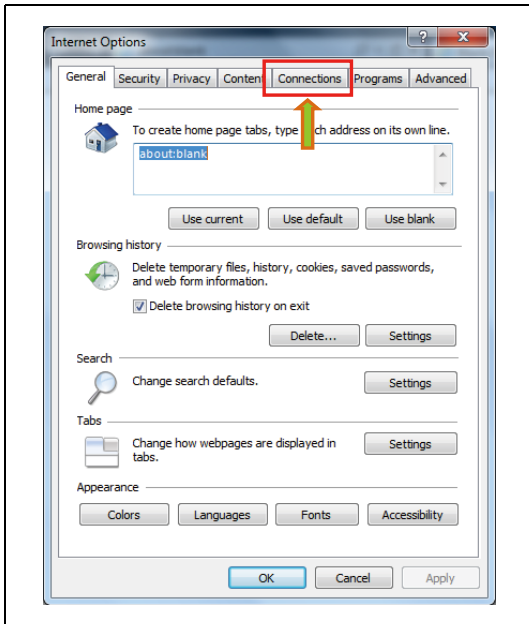
SHTS80ZZZ1200001

- (2) From the menu, click [Internet Options].



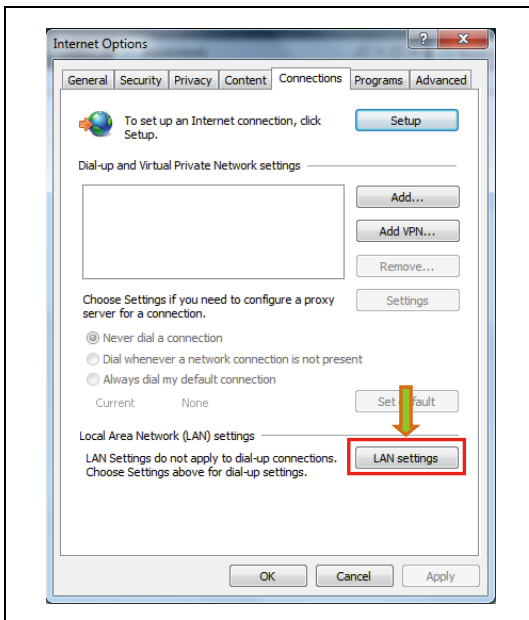
SHTS80ZZZ1200002

- (3) From the [Internet Options] window, click [Connections].



SHTS80ZZ1200003

- (4) From the [Connections] window, click [LAN settings].

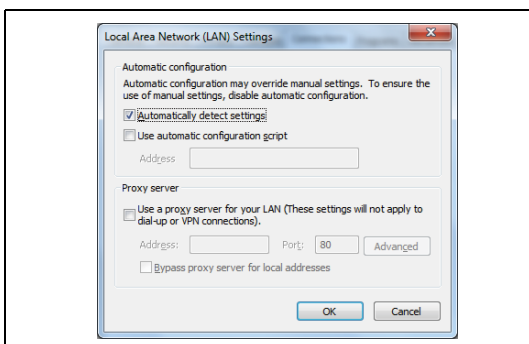


SHTS80ZZ1200004

- (5) Set up the proxy server.

HINT

For more information on proxy server setup, contact the network administrator.



SHTS80ZZ1200005